



KERASOFT<sup>®</sup> 3

SILICONE  
HYDROGEL

3-MONTHLY LENSES  
FOR KERATOCONUS  
AND POST GRAFT FITTING

Soft contact lens for keratoconus and post graft fitting

IMPROVED DESIGN - NEW SiH MATERIAL - DEDICATED WEBSITE

ULTRAVISION CLPL N



## Introducing **KeraSoft<sup>®</sup>3**

**KeraSoft<sup>®</sup>3** is a new soft lens for keratoconus and post graft fitting. It has a front surface toric design and is produced in Definitive™ Silicone Hydrogel 74%\* material.

The improved design gives good, stable vision with greater comfort and longer wearing times.

### **Important**

**KeraSoft<sup>®</sup>3** is quite different in design and material from KeraSoft<sup>®</sup>2 and thus cannot be fitted from KeraSoft<sup>®</sup>2 trial sets or ordered using current KeraSoft<sup>®</sup>2 lens parameters.



\*Definitive™ is a trademark of Contamac Ltd



ULTRA VISION **CLPL** N



# KeraSoft®3 Lens Technical Specifications



<b>Material</b>	Definitive™ Silicone Hydrogel 74% water content
<b>Modulus</b>	0.38 MPa (Typical of mid water content materials)
<b>Base Curves</b>	Series 8.00mm (A), 8.20mm (B), 8.40mm(C), 8.60mm(D) *
<b>Diameter</b>	14.00mm 14.50 mm 15.00mm
<b>Lens design</b>	Front Surface Asphere or Aspheric Toric prism ballasted with balanced overall thickness. Wavefront Aberration Control
<b>Power Range</b>	Sphere: +30.00DS to -30.00DS (in 0.25 steps) ** Cylinder: -0.50 to -11.00DC (in 0.25 steps) Axis: 0° to 180° (in 1° steps) Add up to +3.00 (in 0.25 steps)
<b>Handling Tint</b>	Clear
<b>DK</b>	$60 \times 10^{-11}$ (cm <sup>2</sup> /sec)[mlO <sub>2</sub> /(ml x mmHg)]
<b>Modality</b>	3-monthly lenses for daily wear
<b>Pack size</b>	Single lens, 2-pack

\* 8.80 and 9.00 available if required  
 \*\* Extended range of powers available to order  
 Definitive™ is a trademark of Contamac Ltd



ULTRA VISION CLPL N



## KeraSoft®3 Trial Set Values

BCOR	Diameter	Power	Approximate K Readings	
8.00 (A)	14.50	-12.00 and -14.00	<6.00	Recommended initial fitting lens for keratoconus with central cones and normal peripheries
8.20 (B)	14.50	-10.00 and -8.00	6.00 to 6.50	
8.40 (C)	14.50	-6.00 and -4.00	6.50 to 6.80	
8.60 (D)	14.50	-2.00 and Plano	6.80 to 7.20	
8.80 *	14.50	Plano	For flatter peripheries see Kerasoft®3 Fitting Guide For Irregular Corneas see KeraSoft®IC Fitting Guide	
9.00 *	14.50	Plano		

# The Definitive<sup>™</sup> Silicone Hydrogel Material\*

Properties	Attributes
Naturally hydrophilic SiH	Excellent wetting
Lathe cut	Wide range of powers
74% water content	Higher comfort level
DK 60	Increased oxygen transmission
Modulus 0.38	Faster settling time
High water retention	Longer wear times

\*Definitive<sup>™</sup> is a trademark of Contamac Ltd



ULTRAVISION CLPL N

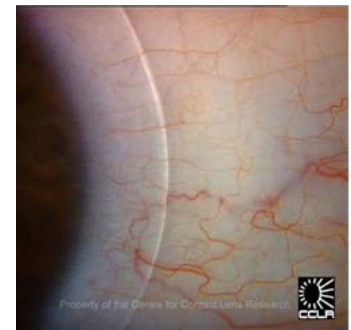


## Benefits of Silicone Hydrogel

Silicone Hydrogel lenses have proved extremely successful in promoting long term eye health.

The new Definitive™ material is 74% water content and has consistently demonstrated high water retention. This allows longer wearing times and greater comfort.

It performs well in challenging environments such as hot climates, air conditioning and extended computer usage.



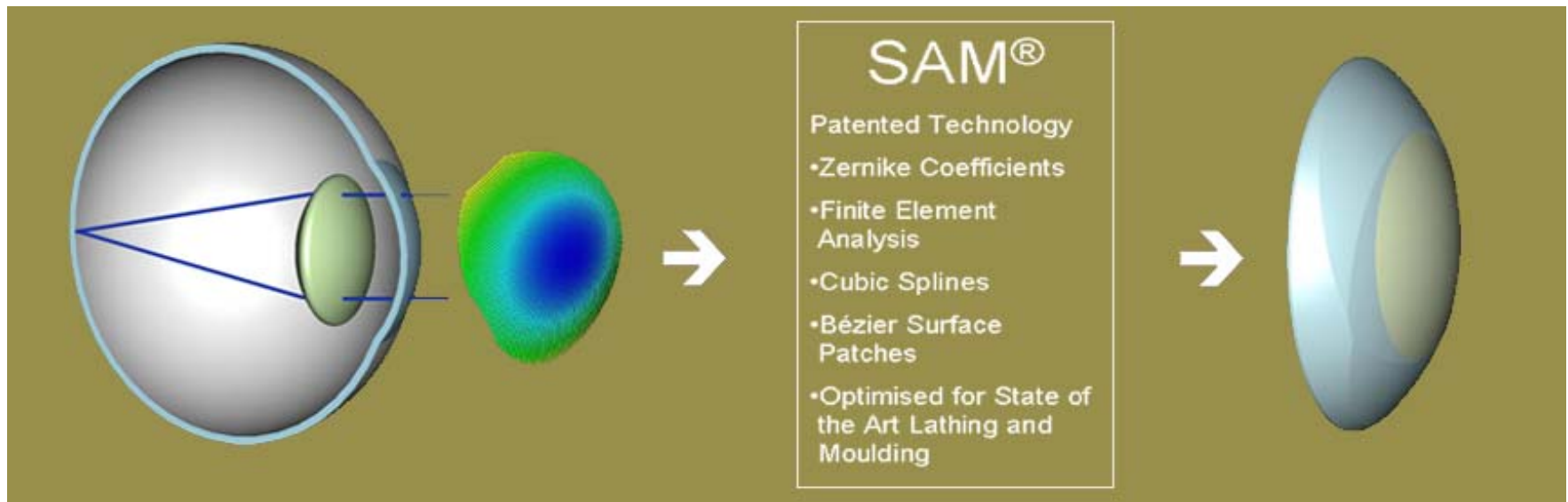
Images reproduced with kind permission of the Centre for Contact Lens Research



ULTRAVISION CLPL N



## Wavefront Aberration Control



## Removing KeraSoft®3 lenses

The high water retentiveness means the lens surface remains lubricated and slippery, even after hours of wear.

Most wearers use the normal “pinch” method to remove the lenses.

An alternative removal approach, if the “pinch” method proves difficult, is to apply lid pressure from the top and bottom, using the same method as that for the removal of an RGP lens (as illustrated in the video)



Please note that to watch the above video you must view this file as a slideshow.

## KeraSoft<sup>®</sup>3 Design Characteristics

The **KeraSoft<sup>®</sup>3** is a front surface aspheric toric design with prism ballasting. Trial lenses have an inferior vertical laser mark to determine orientation. It is important to note the position of this mark when ordering final lenses.

When carrying out a fitting procedure for a Keratoconus patient with a **KeraSoft<sup>®</sup>3** lens, it is essential that the **KeraSoft<sup>®</sup>3** Trial Set is used, due to the specific design characteristics involved, which differ from earlier versions.

Earlier KeraSoft<sup>®</sup> products provide a back surface toric design, which uses different fitting characteristics.

## KeraSoft®3 Fitting Procedure

Insert the initial trial lens from the **KeraSoft®3** trial set and determine the optimum fit  
Perform an over-refraction with the trial lens on the eye to establish which powers are needed, noting the orientation of the laser mark

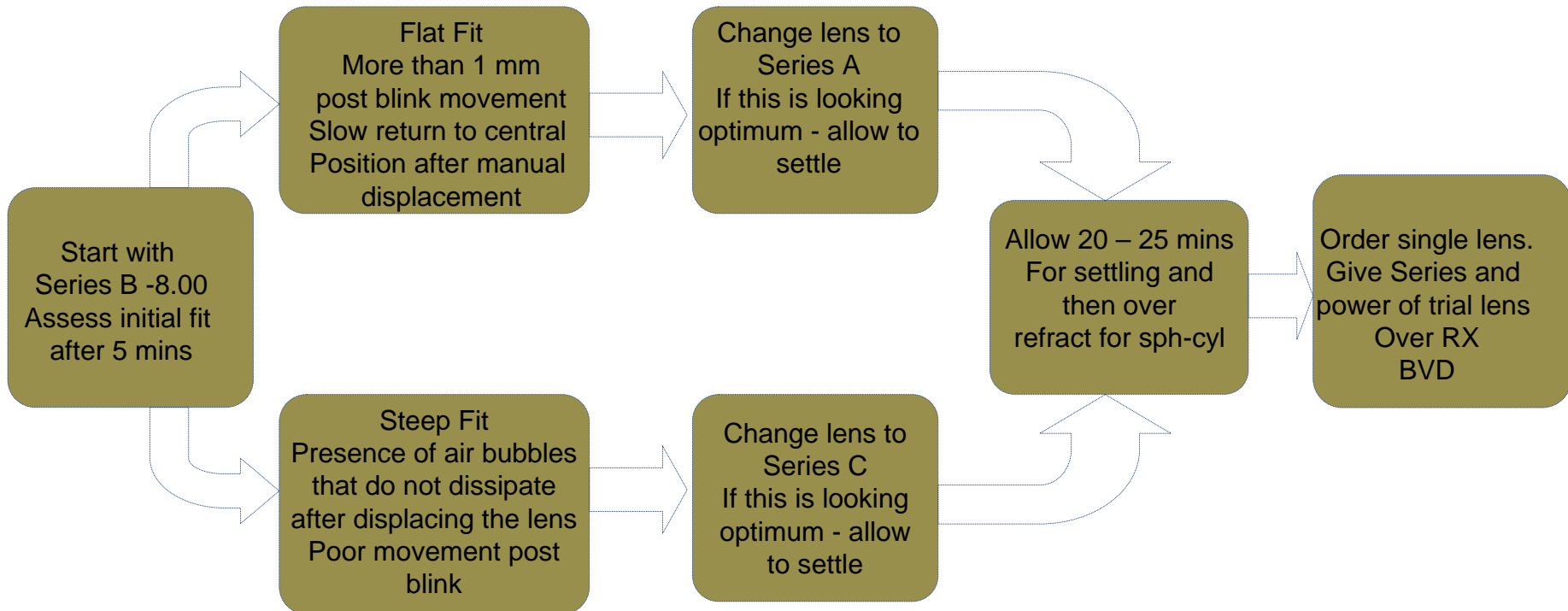
It can sometimes be helpful to perform keratometry or topography over the trial lens in-situ, to establish the cylinder and axis required

To assist with initial orders, single lenses come with a fitting warranty.

To order a single lens please state the following:

- details of the trial lens used
- over-refraction result and orientation of laser mark
- back vertex distance (BVD)
- the overall diameter (OD) required
- for multifocals, please also state which eye is the dominant eye.

## Example fitting of KeraSoft<sup>®</sup>3



## Ordering KeraSoft®3



When you are ready to order the final lenses, the following package options are available:



Single Lens	Contents: 1 right or left lens. Fitting and manufacturing warranty included. Recommended for use when ordering a first lens after a fitting procedure.
2 Pack	Contents: 2 right or left lenses. Manufacturing warranty only (no fitting warranty). Recommended for use where the fit is stable and no exchanges are required.



# ULTRAVISION N



## KeraSoft®<sup>3</sup> Case Study

Patient GB: Slide 1

Patient GB is a car rally driver. He was diagnosed with keratoconus in 1988. GB's keratoconus rapidly progressed, and he required corneal grafts in both eyes: RE 1989 and LE 1990.

Resultant spectacle prescription after surgery was:

R +1.00/-7.50 x 105 VA 6/7.5      L +3.00/-4.00 x 100 VA 6/7.5

GB was intolerant of the full prescription because of visual effects from the high levels of astigmatism



ULTRAISION  N



## KeraSoft®3 Case Study

Patient GB: Slide 2

Although GB could wear RGPs and achieve V.A.'s of R 6/5 L 6/5, he was having tolerance issues and wearing time was reducing significantly

GB needed a soft lens option in order to be able to drive rally cars competitively

All other soft lens options had proved unsatisfactory with respect to vision and wearing times

GBs could only wear a normal soft lens for 2 hours before there was oedema of the host cornea

GB was fitted with **KeraSoft®3**



ULTRAISION CLPL N



## KeraSoft®<sup>3</sup> Case Study

Patient GB: Slide 3

GB's final V.A.'s with **KeraSoft®<sup>3</sup>** were: R 6/5-1 L6/6-1

Transition from RGP to **KeraSoft®<sup>3</sup>** was managed gradually to ensure that GB did not have any recurrence of his old oedema issues

With **KeraSoft®<sup>3</sup>**, GB's wearing time was extended to 12 hours with no oedema

GB was able to resume his rally driving with confidence

GB comments:

“I can't get over the fact I am wearing soft lenses and getting the vision of RGPs”



ULTRAISION  N





## KeraSoft® website

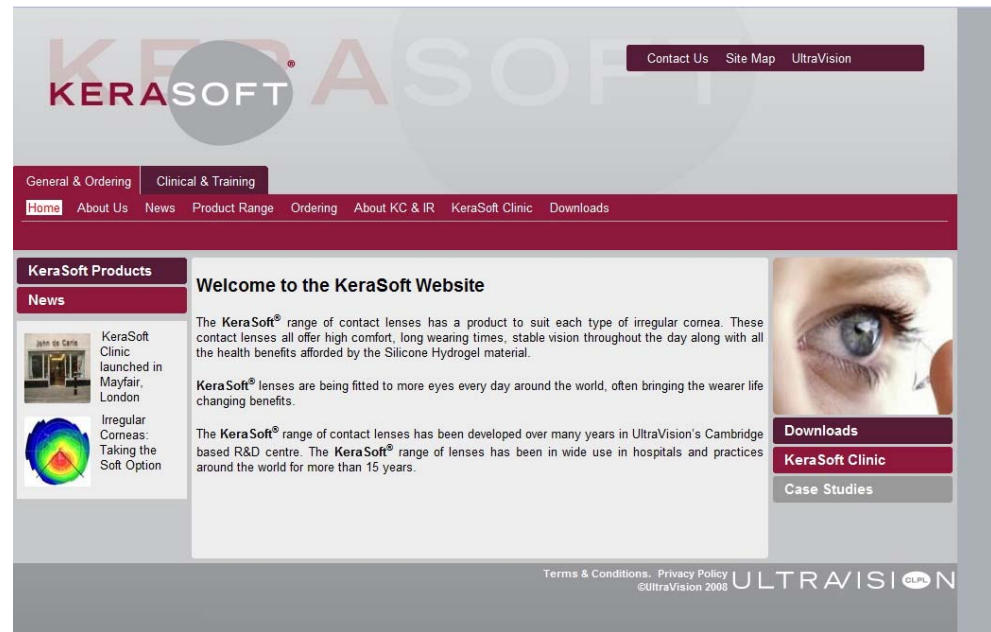
www.kerasoft.co.uk

Dedicated entirely to the **KeraSoft®** range of contact lenses.

Sales of keratoconic lenses tend to be patient driven

www.kerasoft.co.uk contains a wealth of knowledge about Keratoconus for practitioner and for patients

Many wearers are already visiting this website



Click image to link to site



# ULTRAVISION CLPL N



## KeraSoft®<sup>3</sup> Contact Details

### UltraVision

To request information  
[info@ultravision.co.uk](mailto:info@ultravision.co.uk)

To place an order  
[orders@ultravision.co.uk](mailto:orders@ultravision.co.uk)

Visit our dedicated website  
[www.kerasoft.co.uk](http://www.kerasoft.co.uk)

Commerce Way  
Leighton Buzzard  
Bedfordshire  
LU7 4RW  
United Kingdom

Tel +44 (0)1525 381112  
Fax +44 (0)1525 370091  
[www.ultravisiongroup.com](http://www.ultravisiongroup.com)



ULTRAVISION  N

